

**BY ORDER OF THE COMMANDER  
MOODY AIR FORCE BASE**

**MOODY AIR FORCE BASE  
INSTRUCTION 13-212**



**11 JULY 2018**

***Nuclear, Space, Missile, Command and  
Control Operations***

***RANGE PLANNING AND OPERATIONS***

**COMPLIANCE WITH THIS PUBLICATION IS MANDATORY**

---

**ACCESSIBILITY:** Publications and forms are available for downloading or ordering on the e-Publishing website at [www.e-Publishing.af.mil](http://www.e-Publishing.af.mil).

**RELEASABILITY:** There are no releasability restrictions on this publication.

---

OPR: 23 OSS/OSOR

Certified by: 23 FG/CC  
(Col Michael A. Curley)

Supersedes: N/A

Pages: 21

---

This instruction supplements Air Force Instruction (AFI) 13-212V1, Air Combat Command (ACC) Supplement, *Range Planning and Operations*. It establishes responsibilities, policies, and procedures for planning, maintenance, and operation of the Grand Bay Range (GBR) complex and applies to all who work and operate on this range. This instruction is directive in nature with the intent to standardize local procedures while not restricting mission accomplishment. Refer recommended changes and questions about this publication to the Office of Primary Responsibility (OPR) using the AF Form 847, *Recommendation for Change of Publication*; route AF Form 847s through local publications/forms managers. Ensure that all records created as a result of processes prescribed in this publication are maintained in accordance with Air Force Manual (AFMAN) 33-363, *Management of Records*, and disposed of in accordance with Air Force Records Information Management System (AFRIMS) Records Disposition Schedule (RDS) located at <https://www.my.af.mil/afirms/afirms/afirms/rims.cfm>.

***SUMMARY OF CHANGES***

This publication has been revised in its entirety and must be thoroughly reviewed.

<b>Chapter 1— RESPONSIBILITIES</b>	<b>5</b>
1.1. General Information.....	5
1.2. 23 WG Range Operating Authority (ROA).....	5
1.3. Other Agencies. ....	5
1.4. Host Unit.....	5
1.5. Civil Engineer Squadron (CES).....	5
1.6. Weather.....	5
1.7. Range Users. ....	5
1.8. Unit Feedback. ....	5
1.9. Scheduling Authority.....	5
<b>Chapter 2— DESCRIPTION OF RANGE AND MILITARY OPERATING AREA</b>	<b>6</b>
2.1. General Information. ....	6
2.2. Restrictions .....	6
2.3. Range and Military Operating Area (MOA).....	7
2.4. Range Routes, Air Refueling (AR) Tracks and Remotely Piloted Aircraft (RPA) Corridors. ....	7
2.5. Landing Zones and Drop Zones.....	7
<b>Chapter 3— OPERATIONS/WEAPONS DELIVER PROCEDURES</b>	<b>8</b>
3.1. Overview.....	8
3.2. Authorized Ordnance.....	8
3.3. Restrictions, Master Arm Procedures, Limitations, and Footprint Data.....	8
3.4. Laser or Directed Energy Operations. ....	8
3.5. Night Operations.....	9
3.6. Unmanned Threat Emitters.....	9
3.7. Transition Corridor Operations.....	9
3.8. Helicopter Operations. ....	9
3.9. Weather.....	9
3.10. Minimums and foulds. ....	9
3.11. Emergency Procedures .....	9

<b>Chapter 4— ELECTRONIC WARFARE RANGE</b>	<b>10</b>
4.1. Purpose.....	10
4.2. Scheduling.....	10
4.3. Events.....	10
4.4. Restrictions.....	10
4.5. Communications.....	10
4.6. Tactics.....	10
4.7. Operations.....	10
4.8. Simulators.....	10
4.9. Feedback.....	10
<b>Chapter 5— RANGE CONTROL OFFICER PROCEDURES</b>	<b>11</b>
5.1. Responsibilities.....	11
5.2. Checkout and Certification Procedures.....	11
5.3. Scheduling.....	11
5.4. Notification and Transportation.....	11
5.5. Range Opening.....	11
5.6. Range Schedule.....	11
5.7. Aircraft Control.....	11
5.8. Range Fouls.....	11
5.9. Ground Party Control.....	11
5.10. Restricted Operations.....	12
Table 5.1. GBR Fire Danger Ratings and General Operational Restrictions.....	12
5.11. Strafing Operations.....	13
5.12. Range Visitors.....	13
5.13. Range Closure.....	13
5.14. Reports.....	13
<b>Chapter 6— AIR COMBAT MANEUVERING INSTRUMENTATION</b>	<b>14</b>
<b>Attachment 1— GLOSSARY OF REFERENCES AND SUPPORTING INFORMATION</b>	<b>15</b>
<b>Attachment 2— GRAND BAY RANGE BOUNDARIES</b>	<b>17</b>

<b>Attachment 3— R-3008 AIRSPACE</b>	<b>18</b>
<b>Attachment 4— MOODY MOA COMPLEX</b>	<b>20</b>
<b>Attachment 5— New Weapons/Deliveries</b>	<b>21</b>

## Chapter 1

### RESPONSIBILITIES

**1.1. General Information.** Commanders of 23d Wing (WG) units will ensure personnel under their command comply with this supplement. Personnel of units or agencies outside the 23 WG are also required to comply with this supplement. Due to the close proximity of GBR to Moody Air Force Base (MAFB), users should also be familiar with procedures in MAFBI 11-250, *Airfield Operations*.

**1.2. 23 WG Range Operating Authority (ROA).** The 23 WG/CC has designated the 23 FG/CC as the ROA for GBR.

**1.3. Other Agencies.** Forestry and Wildlife Management are the primary land users inside the GBR boundaries (approximately 5,900 acres) when the range is not active. In accordance with (IAW) a letter of agreement established with the Georgia Department of Natural Resources, parts of GBR are open to the general public on weekends for recreation and authorized hunting.

**1.4. Host Unit.** The 23 OSS/OSOR (Range Management Office) is responsible for overall range management functions and range contractor oversight.

**1.5. Civil Engineer Squadron (CES).** The 23 CES is responsible for environmental management support, Explosive Ordnance Disposal support, major real property maintenance and project engineering support for GBR.

**1.6. Weather.** 23 OSS/OSW (WG Weather) provides GBR forecasts including winds aloft via automated weather observing system. GBR will be closed to Class A operations when surface winds exceed 35 knots steady state.

**1.7. Range Users.** All range users are responsible for ensuring compliance with the provisions of AFI 13-212V1 and this supplement. All ordnance deliveries must be calculated using the Weapons Danger Zone (WDZ) program and approved by the ROA prior to use. Ground party personnel requesting GBR access must coordinate through the Range Management Office and will receive a ground user safety briefing prior to being allowed on the range. The range staff is the focal point for all range scoring and monitoring of ground parties on the range.

**1.8. Unit Feedback.** Contact Range Management Office at (229) 257-3509 (DSN 460-3509).

**1.9. Scheduling Authority.** The 23 OSS/OSOS (WG Scheduling Office) is the scheduling authority for GBR and associated airspace. Contact the WG Scheduling Office at (229) 257-7831 (DSN 460-7831). Refer to MAFBI 11-200, *Scheduling Operations*, for additional information.

## Chapter 2

### DESCRIPTION OF RANGE AND MILITARY OPERATING AREA

**2.1. General Information.** GBR is located in Lanier and Lowndes Counties, Georgia, adjoining the eastern border of MAFB. See [Attachment 2](#) for a depiction of GBR boundaries.

2.1.1. Capabilities. GBR is a single range, two-tower conventional facility, consisting of scored targets for bombing and strafing, as well as helicopter side-fire targets, drop zones (DZs), and an unimproved landing zone (ULZ) for fixed-wing aircraft. GBR's primary pattern is a north-to-south, left-hand pattern. MAFB-assigned units may fly a south-to-north, right-hand pattern. See the GBR User's Guide for a complete list of capabilities. GBR user guide is located on the GBR SharePoint page at <https://moody.eim.acc.hedc.af.mil/23wg/23fg/23oss/OSO/R-3008/SitePages/Home.aspx>

2.1.2. Hours of Operation. Normal hours of operation are Monday through Thursday, 0800 – 0100L and Friday, 0800 – 2200L. Operations to support Reserve weekend Unit Training Assemblies (UTAs) occur once per month on Saturday.

#### 2.1.3. Scheduling Procedures

2.1.3.1. Range Schedule Requests. GBR scheduling is accomplished via Central Scheduling Enterprise (CSE) (<https://cseaf.eglin.af.mil/cse/home.aspx>). All scheduling requests will be sent to the WG Scheduling Office. If range support is required on weekends (other than UTA), submit the request at least 30 days prior. Requests for support within normal hours should be made at least two weeks prior to the week desired. Same day requests should be made with the WG Scheduling Office and require 60-minute notification if the range period was not originally scheduled to ensure the range is clear of ground personnel. After 1630L make requests with the Range Control Officer (RCO). Airborne requests to use GBR will be made with the RCO. Refer to MAFBI 11-200 for range use priorities.

2.1.3.2. Open Range Periods. Open range periods on the weekly schedule are available to any Department of Defense (DoD) user for authorized range events.

2.1.3.3. Range cancellations. For cancellations other than day of, contact the WG Scheduling Office. For cancellations on the day scheduled, notify the RCO as soon as possible.

#### 2.2. Restrictions

2.2.1. Common/General. Do not overfly manned positions.

2.2.2. Range. Valdosta Approach Control (RAPCON) has the authority to suspend operations on GBR for flight safety or to accommodate high priority Instrument Flight Rules (IFR) operations at MAFB. Should this occur, RAPCON will coordinate with the RCO. Aircraft operating on GBR will cease weapons delivery operations and hold as directed by the RCO.

2.2.3. Airspace. R-3008 falls within the Federal Aviation Administration (FAA) mandated 3NM buffer of MAFB's approach/departure corridor. Aircraft occupying R-3008 may be

directed to cease operations and hold above a certain altitude to facilitate MAFB IFR arrivals/departures of non-participating aircraft.

### **2.3. Range and Military Operating Area (MOA)**

2.3.1. Air-to-Ground Range. GBR is classified as an air-to-ground range overlaid by R-3008. R-3008 is divided into four segments; R-3008A, R-3008B, R-3008C, and R-3008D. See [Attachment 3](#) for a depiction of the lateral and vertical limits. The RCO coordinates with RAPCON to open R-3008 15 minutes prior to the first scheduled range period. When R-3008 is active, clearance automatically includes all segments of R-3008 unless otherwise advised by the RCO. The terms “Hot” and “Cold” are used to convey whether R-3008 is in use. When there are no activities on GBR that require airspace activation, R-3008 is considered “Cold” and the RCO may relinquish R-3008 airspace to RAPCON. RAPCON local surveillance radar is required for R-3008 operations. In the event of an emergency where aircraft must be vectored through R-3008, RAPCON will notify the RCO via hot line. Range operations will cease and aircraft on range will hold as specified by RAPCON. RAPCON will advise the RCO when to resume normal range operations.

2.3.2. Tactical Range. See GBR User’s Guide for a description of the limited tactical engagements within GBR.

2.3.3. Electronic Range. See GBR User’s Guide for information regarding the electronic threat capabilities within GBR and the surrounding airspace.

2.3.4. Air-to-Air Range. N/A.

2.3.5. MOA. Scheduling of local MOAs is accomplished through the WG Scheduling Office. See [Attachment 4](#) for a graphic depiction of the lateral and vertical confines of the Moody MOA complex.

### **2.4. Range Routes, Air Refueling (AR) Tracks and Remotely Piloted Aircraft (RPA) Corridors.** No range routes, AR Tracks, or RPA corridors impact use of GBR.

### **2.5. Landing Zones and Drop Zones.** GBR includes multiple DZ’s, and one fixed-wing ULZ. The WG Scheduling Office is the scheduling authority for all GBR DZ and ULZ sites.

2.5.1. DZ/ULZ Operations. Users must review this publication and the current DZ survey (AMC ZAR) prior to scheduling a DZ. The GBR ULZ is for use by locally assigned aircraft and aircrews only. Transient use must be approved by the ROA. The Range Management Office provides general oversight of ULZ operations. The supporting ground crew is responsible for overall safety and operations of the DZ and ULZ. When qualified DZ support personnel are not present, range personnel will ensure the area is clear prior to the RCO providing authorization for drop activity. Final drop/landing authority and overall safety of DZ/ULZ use remains with the aircrew.

## Chapter 3

### OPERATIONS/WEAPONS DELIVER PROCEDURES

**3.1. Overview.** All non-MAFB assigned aircraft will perform a dry clearing/familiarization pass before weapons employment.

**3.2. Authorized Ordnance.** Only release of practice, inert, and ball/tracer munitions are permitted on GBR. Refer to the GBR User's Guide for specific munitions authorized.

3.2.1. Chaff/Flares. Chaff and flares are authorized IAW AFI 11-214, *Air Operations Rules and Procedures*. Advise the RCO of intent to dispense chaff and flares. Within range impact area boundaries, flares will be dispensed at an altitude to ensure burn out before ground impact. Outside the impact area or if a fire hazard is present, the minimum altitude for flare release is 700' AGL (ensures burn out before ground impact).

**3.3. Restrictions, Master Arm Procedures, Limitations, and Footprint Data.** Aircrews may place master arm switch to "ARM" while established in R-3008 and pilots should avoid overflight of populated areas to the max extent possible. Aircrews will confirm "SWITCHES SAFE" with the RCO prior to range exit. The GBR User's Guide is based on results from the WDZ and Surface Danger Zone (SDZ) footprint programs. As such, aircrews will comply with all ordnance and delivery restrictions contained in the GBR User's Guide. Use [Attachment 5](#) for WDZ requests not included in the GBR User's Guide.

3.3.1. Use of live ordnance is prohibited.

3.3.2. Do not use afterburner while below 5,000' AGL unless required for safety of flight.

3.3.3. Non-MAFB assigned aircraft will only operate in a north-to-south, left-hand pattern.

3.3.4. Aircrews will avoid no-fly/noise-sensitive areas listed in the GBR User's Guide.

3.3.5. Aircrews will not drag their nose through the main or flank tower during strafe events.

3.3.6. Gunners on side-firing helicopters will avoid pointing weapon muzzles at any tower, building, or above the horizon. Weapons will be mechanically/electrically safed and/or manually controlled when not actively engaging an authorized target.

3.3.7. Pyrophoric flares and countermeasures, such as MJU-50, MJU-60 and MJU-64 are not authorized.

3.3.8. Fighter/Attack aircraft low angle strafe is not authorized at night.

3.3.9. Aerial delivery of night ground illumination or illumination flares (M257/278 rockets, LUU-1/2/4/5 variants or equivalent) is not authorized.

3.3.10. Aircraft visible or infrared navigation/position lights/strobes are required to be on during night flights while using the range. Flights may modify light configuration after coordination with RCO.

**3.4. Laser or Directed Energy Operations.** GBR is approved for laser and directed energy operations. Approved laser eye protection must be worn by all ground personnel operating in the laser danger area. Prior coordination with the RCO is required for all laser and directed energy operations.

3.4.1. Laser Systems. The list of approved laser systems is located on the GBR SharePoint Site (user access request required). <https://moody.eim.acc.hedc.af.mil/23wg/23fg/23oss/OSO/R-3008/SitePages/Home.aspx>

3.4.2. Airborne. Refer to the list of approved laser systems.

3.4.3. Ground Laser Operations. All ground laser operations must be conducted from approved range manned firing points only. The Range Management Office maintains the current Laser Safety Danger Zone information.

3.4.4. Directed Energy Operations. Coordination with the ROA is required prior to use of any directed energy weapons on GBR.

### **3.5. Night Operations.** Night operations are authorized on GBR.

3.5.1. Night Lighting. See the GBR User's Guide for night lighting configuration.

3.5.2. Night Vision Devices (NVD). NVD operations are approved on GBR and must be conducted IAW current aircrew and RCO training standards.

3.5.3. Infrared Enhanced Targets. See GBR User's Guide for a complete list of infrared enhanced targets available.

### **3.6. Unmanned Threat Emitters.** N/A.

### **3.7. Transition Corridor Operations.** N/A.

**3.8. Helicopter Operations.** Multiple Helicopter Landing Zones (HLZs) exist on GBR. Aircrews must use caution near impact area targets for unexploded ordnance and expended munitions. See GBR User's Guide for a complete listing of approved helicopter operations.

**3.9. Weather.** Aircrews will adhere to weather requirements IAW aircraft specific operational procedures and AFI 11-214. Restricted area operations above a cloud ceiling are authorized.

**3.10. Minimums and fouls.** In addition to the foul criteria listed in AFI 11-214, fousls will be charged for entering the range without clearance and for attacks that fall outside the authorized final attack heading.

### **3.11. Emergency Procedures**

3.11.1. Emergency Airfields. In the event of an in-flight emergency, aircrews are encouraged to recover at MAFB.

3.11.2. Dropped Object and Inadvertent Release. An unintentional (pilot error) or inadvertent release (aircraft/weapons delivery system error) should be followed by a "Knock-It-Off" call. If the release occurs outside of range property, aircrews will comply with the specific actions laid out in the GBR User's Guide.

3.11.3. Hung Ordnance and Unsafe Gun Procedures. Avoid populated areas and inform the RCO of intentions. Attempts to release hung stores are approved. If an unsafe gun situation exists, avoid dragging/pointing the unsafe gun in any direction that, should the gun fire, place any property or persons in danger. Remain within R-3008 until approved to depart by the RCO.

3.11.4. Jettison and Bailout Procedures. See the GBR User's Guide for a detailed description of jettison and bailout procedures.

## Chapter 4

### ELECTRONIC WARFARE RANGE

**4.1. Purpose.** GBR offers a variety of low-fidelity radar threat emitters and shoulder launched missile simulators to support aircrew training. Threats can be employed on-range in support of scheduled missions, or off-range to support MOA training events. Refer to the GBR User's Guide for detailed information.

**4.2. Scheduling.** User's should schedule GBR and associated airspace IAW paragraph 2.1.3. Threat support (on- or off-range) should be coordinated with Range Operations staff at (229) 257-2766 (DSN 460-2766) a minimum of 3 days prior.

**4.3. Events.** N/A.

**4.4. Restrictions.** See GBR User's Guide.

**4.5. Communications.** A threat working frequency is available for coordination with threat system operations crew on UHF 248.65.

**4.6. Tactics.** N/A.

**4.7. Operations.** See GBR User's Guide.

**4.8. Simulators.** See GBR User's Guide.

**4.9. Feedback.** GBR is not equipped to provide threat engagement feedback.

## Chapter 5

### RANGE CONTROL OFFICER PROCEDURES

**5.1. Responsibilities.** The RCO strictly enforces established range flying procedures and aircraft weapons delivery minimums. For safety purposes, the RCO has the authority to deny aircraft access to GBR or may direct aircraft to exit the range. The RCO may assign aircraft altitude within R-3008, assign direction and pattern, control target approach direction, and close any target area to munitions delivery use or ground personnel access. In the event of a non-participating aircraft violation of R-3008 airspace, the RCO will call the “Knock-It-Off,” inform aircraft of the intruder to facilitate de-confliction, and inform RAPCON.

**5.2. Checkout and Certification Procedures.** 23 OSS/OSO is the certifying agency for RCO checkouts. Checkout of new RCOs will be conducted IAW AFI 13-212V1, AFI 13-212\_ACC Sup and the RCO read file.

**5.3. Scheduling.** IAW AFI 13-212V1, AFI 13-212\_ACC Sup, RCOs may not control aircraft for more than 12 hours during any 24 hour period and will not control aircraft for at least 12 hours after being released from duty. RCOs report to GBR at least 30 minutes prior to scheduled range periods to accomplish an inspection of the range and receive a briefing by range personnel on the current condition of the range targets and equipment.

**5.4. Notification and Transportation.** N/A.

**5.5. Range Opening.** The opening RCO conducts an inspection of all ground facilities before opening the range.

**5.6. Range Schedule.** The RCO enforces the schedule on the range. When a flight arrives late, the RCO advises the flight lead of the scheduled time remaining. Unless the next inbound flight concurs, the RCO will not allow a flight to extend their range time.

**5.7. Aircraft Control.** All aircraft operating on GBR require radio contact with the RCO. GBR UHF frequencies are 236.075 MHz primary and 252.775 MHz backup. The primary VHF frequency is 139.000 MHz. All aircraft, Tactical Air Control Parties (TACP), and the RCO must be on the same frequency. Each flight-lead will pass the flight line-up to include call sign, pilot/gun numbers, scheduled range block time, and weapons delivery events. The RCO will respond with clearance, holding instructions, range weather, altimeter setting, MAFB active runway, and any range restrictions, fire or bird hazards.

**5.8. Range Fouls.** See paragraph 3.10.

**5.9. Ground Party Control.** DoD personnel may conduct authorized ground training operations on range. Range periods will be scheduled and tracked with the Wing Scheduling Office IAW range user prioritization. Overnight events will be coordinated with the range staff at least one week prior to the training event. The RCO will receive a detailed briefing on planned events, location, and duration. During ground training events, the ground commander or team lead will establish and maintain two-way radio communications with the RCO for the duration of the training event. In the event radio communication cannot be established or maintained, the ground training event will be terminated when air-to-ground munitions delivery is expected. RCO approval is required for all smoke, flares, blast simulators, etc. due to fire hazards. Environmentally sensitive areas (wetlands, gopher turtle colonies, etc.) will be avoided.

Vehicles and motorcycles will remain on established roads and trails. See GBR User's Guide for a complete description of GBR environmentally sensitive areas.

### 5.10. Restricted Operations

5.10.1. Manual Scoring. Run-in directions will be restricted when manual scoring operations are conducted from the flank tower. See the GBR User's Guide for more information.

5.10.2. Fire Hazard Conditions. MAFB Emergency Services provide firefighting and fire suppression support. GBR operations may be suspended during an emergency response. Range officials use the Georgia Forestry Commission's forecasting system to determine the range fire danger rating (FDR). See Table 5.1 for a list of FDR levels and general operational restrictions at each level. There are no restrictions if using non-tracer rounds (7.62mm or .50 cal) or cold spots (BDUs/rockets) at all fire condition levels. The RCO may restrict target use or direct use of "cold" spots based on conditions regardless of reported fire class and may allow or deny tracer, smokes, flare, or "hot" spot use regardless of reported conditions due to local conditions or recent rainfall periods. RCOs may also limit munitions and/or target use to those targets located in the center portion of the impact area or restrict attack direction. The RCO will determine range closures for small fires contained within impact area firebreaks and may temporarily suspend operations to allow fire suppression activity. In the event of a large fire on the range, the RCO will close the range and accomplish the following steps:

5.10.2.1. Advise aircraft on the range by UHF/VHF radio to cease operations and clear the range airspace.

5.10.2.2. Report fire to the Moody Fire Emergency Services Flight via 911, advise Air Traffic Control and the Command Post of the situation and refer to the MAFB Wildland Fire Plan notification checklist and procedures for handling wildfires.

5.10.2.3. Advise the Wing Scheduling Office, and request they notify units scheduled for remaining range periods of GBR closure.

**Table 5.1. GBR Fire Danger Ratings and General Operational Restrictions**

Fire Danger Rating		Operational Restrictions
1	Low	None
2	Moderate	
3	High	
4	Very High	Operational restrictions exist – See GBR User's Guide for a complete list
5	Extreme	Operational restrictions exist – See GBR User's Guide for a complete list of restrictions. Expect all tracer fire prohibited and only "cold" spot inert ordnance allowed.

**5.11. Strafing Operations.** See GBR User's guide for a complete list of approved ammunition and events.

**5.12. Range Visitors.** Personnel are prohibited from entering GBR from any access point without RCO approval. Gates will remain secure to prevent inadvertent access onto range property and hazard areas unless determined safe by the RCO or range personnel. Personnel will establish radio communications with or call the RCO prior to entering gates or GBR boundaries. All visitors, unless otherwise authorized, will report to the main administration building and will sign in on the visitor's log and receive a safety briefing. Visitors, other than authorized range users, will be escorted at all times unless in a designated "work" area. In such cases, radio communication must be maintained. Personal vehicles are not allowed outside the main administration parking lot unless approved by range personnel. Range personnel nor the government will be responsible for damages while assisting/removing personal vehicles that are stuck or inoperative. For demonstrations or similar public affairs events, all visitors will remain in the reviewing stand area located in the immediate vicinity of the main tower. Other locations used for these purposes will be reviewed by the Range Operations Officer IAW AFI 13-212V1 and approved by the ROA. Any friendly "marking" used will be per JP 3-09.3 to facilitate positive identification by the aircrew. The range expended munitions holding area will remain secured and off-limits to non-range personnel at all times.

**5.13. Range Closure.** The Range Management office will coordinate all range closures with the WG Scheduling Office prior to publishing to the GBR SharePoint site.

**5.14. Reports.** GBR Utilization Reports are submitted IAW AFI 13-212v1 and MAJCOM guidance.

**Chapter 6**

**AIR COMBAT MANEUVERING INSTRUMENTATION**

(This section is not currently applicable to GBR.)

JENNIFER M. SHORT, Colonel, USAF  
Commander

**Attachment 1****GLOSSARY OF REFERENCES AND SUPPORTING INFORMATION*****References***

AFI 13-212 V1, *Range Planning and Operations*, 23 April 2015  
AFI 11-214, *Air Operations Rules and Procedures*, 14 August 2015  
AFI 13-217, *Drop Zone and Landing Zone Operations*, 10 May 2007  
AFI 13-212\_ACC Sup, *Range Planning and Operations*, 13 July 2016  
AFMAN 33-363, *Management of Records*, 25 May 2017  
Grand Bay Range User's Guide,  
MAFBI 11-200, *Scheduling Operations*, 7 July 2017  
MAFBI 11-250, *Flying Operations*, 30 May 2018

***Prescribed Forms***

No Forms Prescribed

***Adopted Forms***

Air Force Form 847, *Recommendation for Change of Publication*

***Abbreviations and Acronyms***

**AGL**—Above Ground Level  
**ATC**—Air Traffic Control  
**AWOS**—Automated Weather Observation System  
**CSE**—Central Scheduling Enterprise  
**DZ**—Drop Zone  
**EOD**—Explosive Ordnance Disposal  
**FDR**—Fire Danger Rating  
**GBR**—Grand Bay Range  
**IR**—Infrared  
**LSDZ**—Laser Safety Danger Zone  
**HLZ**—Helicopter Landing Zone  
**MOA**—Military Operating Area  
**NVD**—Night Vision Device  
**RAPCON**—Radar Approach Control  
**RCO**—Range Control Officer

**ROA**—Range Operating Authority

**SDZ**—Surface Danger Zone

**ULZ**—Unimproved Landing Zone

**UXO**—Unexploded Ordnance

**WDZ**—Weapon Danger Zone

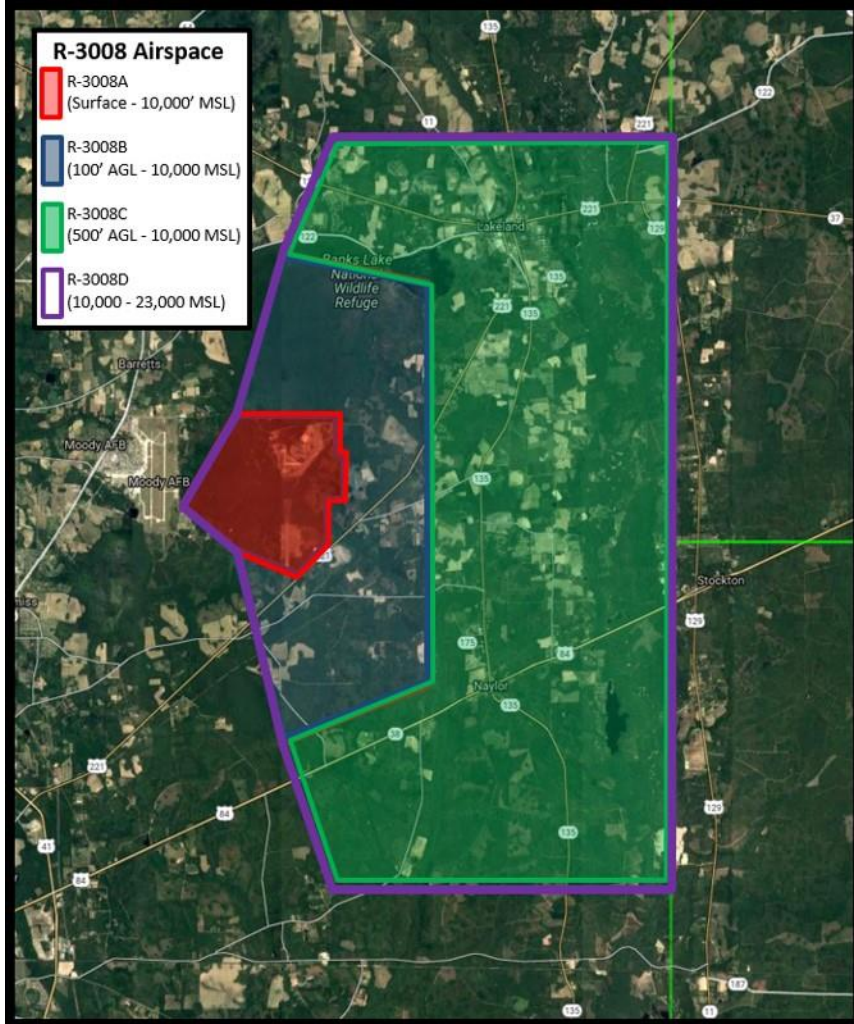
Attachment 2  
GRAND BAY RANGE BOUNDARIES

Figure A2.1. Grand Bay Range Boundaries



Attachment 3  
R-3008 AIRSPACE

Figure A3.1. R-3008 Airspace



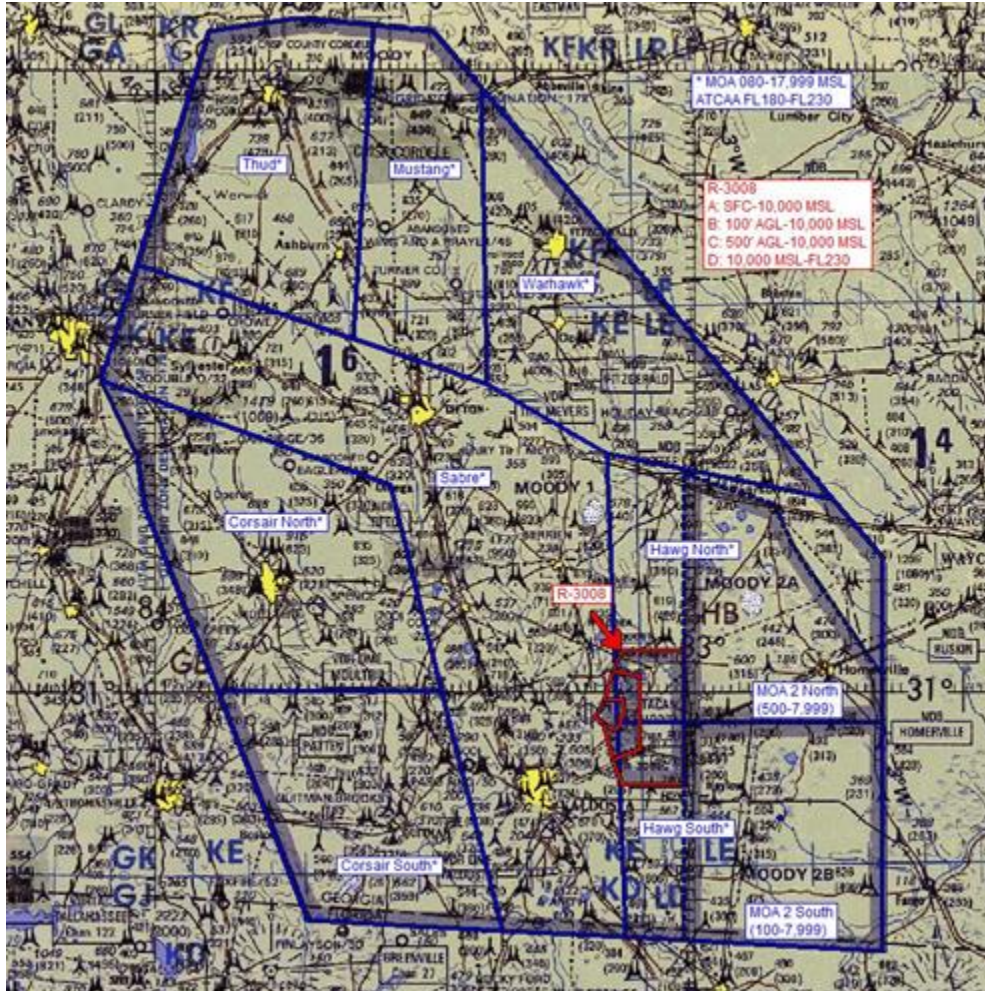
**Table A3.1. Air Space Configuration**

<b>Airspace</b>	<b>Location</b>
<b>R-3008A</b>	N30°57'36.00" W83°11'05.00" to N30°59'13.00" W83°10'00.00" to N30°59'13.00" W83°07'53.00" to N30°58'31.00" W83°07'53.00" to N30°58'31.00" W83°07'45.00" to N30°57'44.00" W83°07'45.00" to N30°57'44.00" W83°08'05.00" to N30°56'56.00" W83°08'05.00" to N30°56'24.00" W83°08'43.00" to N30°56'51.00" W83°10'00.00" to beginning.
<b>R-3008B</b>	N30°59'13.00" W83°10'00.00" to N31°02'01.00" W83°09'00.00" to N31°01'31.00" W83°06'00.00" to N30°54'31.00" W83°06'00.00" to N30°53'31.00" W83°09'00.00" to N30°56'51.00" W83°10'00.00" to N30°56'24.00" W83°08'43.00" to N30°56'56.00" W83°08'05.00" to N30°57'44.00" W83°08'05.00" to N30°57'44.00" W83°07'45.00" to N30°58'31.00" W83°07'45.00" to N30°58'31.00" W83°07'53.00" to N30°59'13.00" W83°07'53.00" to beginning.
<b>R-3008C</b>	N31°04'01.00" W83°01'00.00" to N30°51'01.00" W83°01'00.00" to N30°51'01.00" W83°08'00.00" to N30°53'31.00" W83°09'00.00" to N30°54'31.00" W83°06'00.00" to N31°01'31.00" W83°06'00.00" to N31°02'01.00" W83°09'00.00" to N31°04'01.00" W83°08'00.00" to beginning.
<b>R-3008D</b>	N31°04'01.00" W83°01'00.00" to N30°51'01.00" W83°01'00.00" to N30°51'01.00" W83°08'00.00" to N30°53'31.00" W83°09'00.00" to N30°56'51.00" W83°10'00.00" to N30°57'36.00" W83°11'05.00" to N30°59'13.00" W83°10'00.00" to N31°02'01.00" W83°09'00.00" to N31°04'01.00" W83°08'00.00" to beginning.

Attachment 4

MOODY MOA COMPLEX

Figure A4.1. Moody MOA Complex



Attachment 5

NEW WEAPONS/DELIVERIES

Figure A5.1. Request for New Weapons/Deliveries

**REQUEST FOR NEW WEAPONS/DELIVERIES**  
(Submit to 23 OSS/OSOR)

Unit: \_\_\_\_\_ Requestor: \_\_\_\_\_

Phone (DSN): \_\_\_\_\_ Email Address: \_\_\_\_\_

Date of Request: \_\_\_\_\_ Aircraft: \_\_\_\_\_

Munition: \_\_\_\_\_ Laser Guided: Yes/No \_\_\_\_\_ JDAM \_\_\_\_\_

Event: Strafe \_\_\_\_\_ Level \_\_\_\_\_ Dive \_\_\_\_\_ Loft/Toss \_\_\_\_\_

Tactic (HAS, LAS, HADB, HAR, etc): \_\_\_\_\_

Number of Bombs (if applicable): \_\_\_\_\_

Suggested Target(s): \_\_\_\_\_

Airspeed (In KTAS): Minimum \_\_\_\_\_ Maximum \_\_\_\_\_

Release Altitude (Ft in AGL): Minimum \_\_\_\_\_ Maximum \_\_\_\_\_

Release Angle (+/-): Minimum \_\_\_\_\_ Maximum \_\_\_\_\_

Release Range (Ft or NM) Minimum \_\_\_\_\_ Maximum \_\_\_\_\_

Buffer Distance/Minimum Safe Distance (Ft or Meters): \_\_\_\_\_

**ADDITIONAL INFORMATION FOR AIRCRAFT WITH MOVEABLE GUNS (AC-130, HH-60, etc)**

Brass Over-Board: Yes \_\_\_\_\_ No \_\_\_\_\_ Hover-Fire: Yes \_\_\_\_\_ No \_\_\_\_\_

Event: Strafe \_\_\_\_\_ Side-Fire \_\_\_\_\_ Circling \_\_\_\_\_ Linear \_\_\_\_\_

**OTHER NOTES:**